

# Woman to Woman



LUTHERAN HOUR MINISTRIES

*People Of Christ With The Message Of Hope*

## Woman to Woman – Talk You Can Trust!

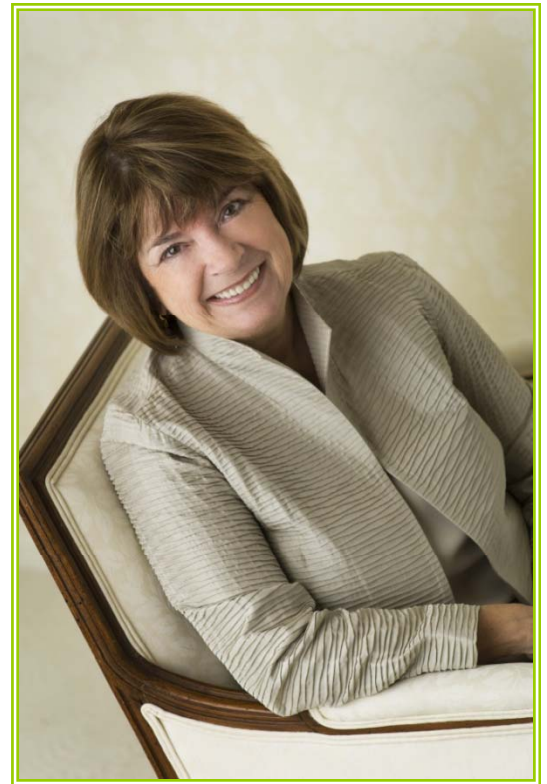
**Woman to Woman®**, the award-winning radio program created and hosted by Phyllis Wallace, offers hope and help for the great challenges facing women today. By introducing her listeners to guests who have expertise and the experience to back it up, Phyllis makes each show relevant.

According to Phyllis, “Women today have more choices and resources than perhaps ever before in history. But we’re stressed and feel pushed to the max. We accurately perceive our culture expecting us to ‘do’ and ‘be’ everything, and we’re saying, ‘Wait a minute! Where’s the change agent for me in all of this?’”

Phyllis’ objective for the show is simple. “My goal is to inform, inspire, transform, and set fire to the hearts of women, to apply God’s very practical, loving genius to the demands of everyday life. He adds the ‘extra’ to ‘ordinary’, and this show is about how that works in a very practical day-to-day sense.”

Bringing years of experience in counseling to her broadcasts, Phyllis is an accomplished author and public speaker. She conducts retreats and seminars for groups, community events, LWML meetings, and the LCMS District Pastors’ Wives conventions.

Phyllis holds a B.A. in sociology and a minor in psychology from the University of Illinois—Champaign. She also has an M.A. in guidance counseling with an emphasis on youth corrections and family therapy from Southern Illinois University—Edwardsville.



*Woman to Woman*

● ● ● ● ● **Talk You Can Trust**

You can also listen to the program online and find helpful articles as well as additional information about the guests featured on the show by visiting the **Woman to Woman** Web site found at:  
[www.womantowomanradio.com](http://www.womantowomanradio.com)

For additional information, go to [www.lhm.org/radiotv](http://www.lhm.org/radiotv) or call **1.888.988.2057**